



Jody Mitchell
"Juggling"
Lithograph (2011)
22x30"



Chey Miller
"Until the Heavens Burn"
Relief Monoprint (2018)
9x12"
"Reach"



Noah Laroia-Ngyuen
"Poseidon"
Digital Photography
And Mixed Media (2017)
16x20"



Joohye Park
"Foggy Port"
Etching and Aquatint (2011)
8x10"



Spenser Brenner
"Benched"
Drypoint and Monprint (2012)
8x10"



Monica Morales
"Mea Cupla"
Intaglio, Monoprint,
and drypoint (2017)
5x7"



Reece Smith
"Untitled"
Digital Illustration (2019)
14x12"

President Franklin D. Roosevelt's Bedroom, Little White House, Warm Springs, Georgia



92-H391

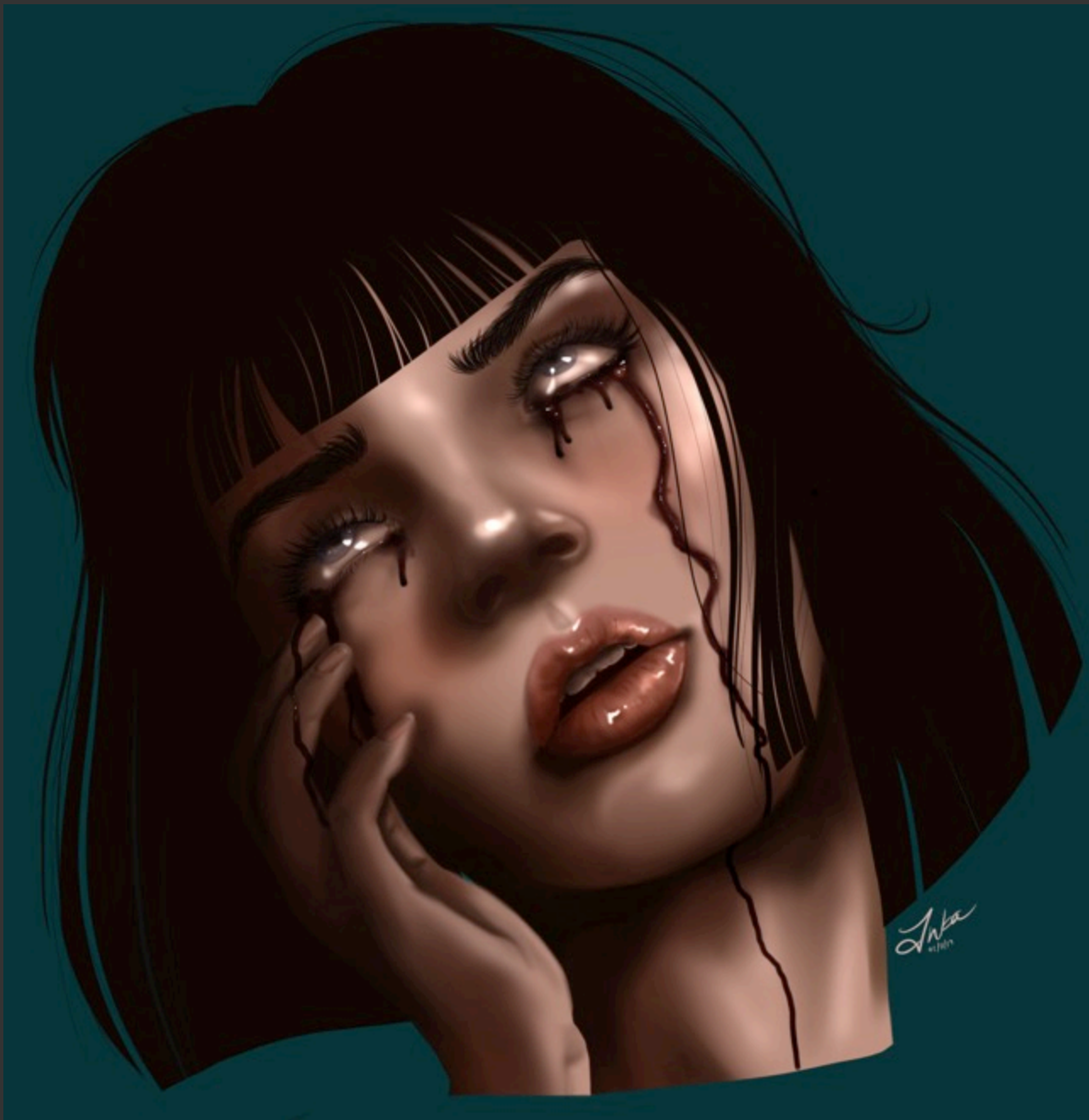
Jody Mitchell
"Roosevelt's Bedroom"
Silkscreen (2012)
6x9"



Spenser Brenner
"Couch Man"
Collage and Drypoint (2013)
8x11"



Sophia Nicholson
"Circe"
Watercolor (2018)
11x14"



Nicole Koblyanski
"Pulp"
Digital Illustration(2019)
14x14"



Emily Eversgerd
"Tiptoe in the Moonlight"
Etching and Aquatint (2011)
8x10"



Nicole Osbourne
"Jessica Danielle"
Silkscreen (2013)
6x9"



Ava St. Pere
"What Divides You?"
Make up, stencil, silkscreen (2018)
9x12""



Gwiyeon Han
"Charcoal Still Life"
Charcoal (2014)
18x24"



Emily Eversgerd
"Night Watch"
Relief/Linoleum (2011)
9x12"

Chey Miller
"The Little Mermaid"
Pen and Ink(2018)
18x24"





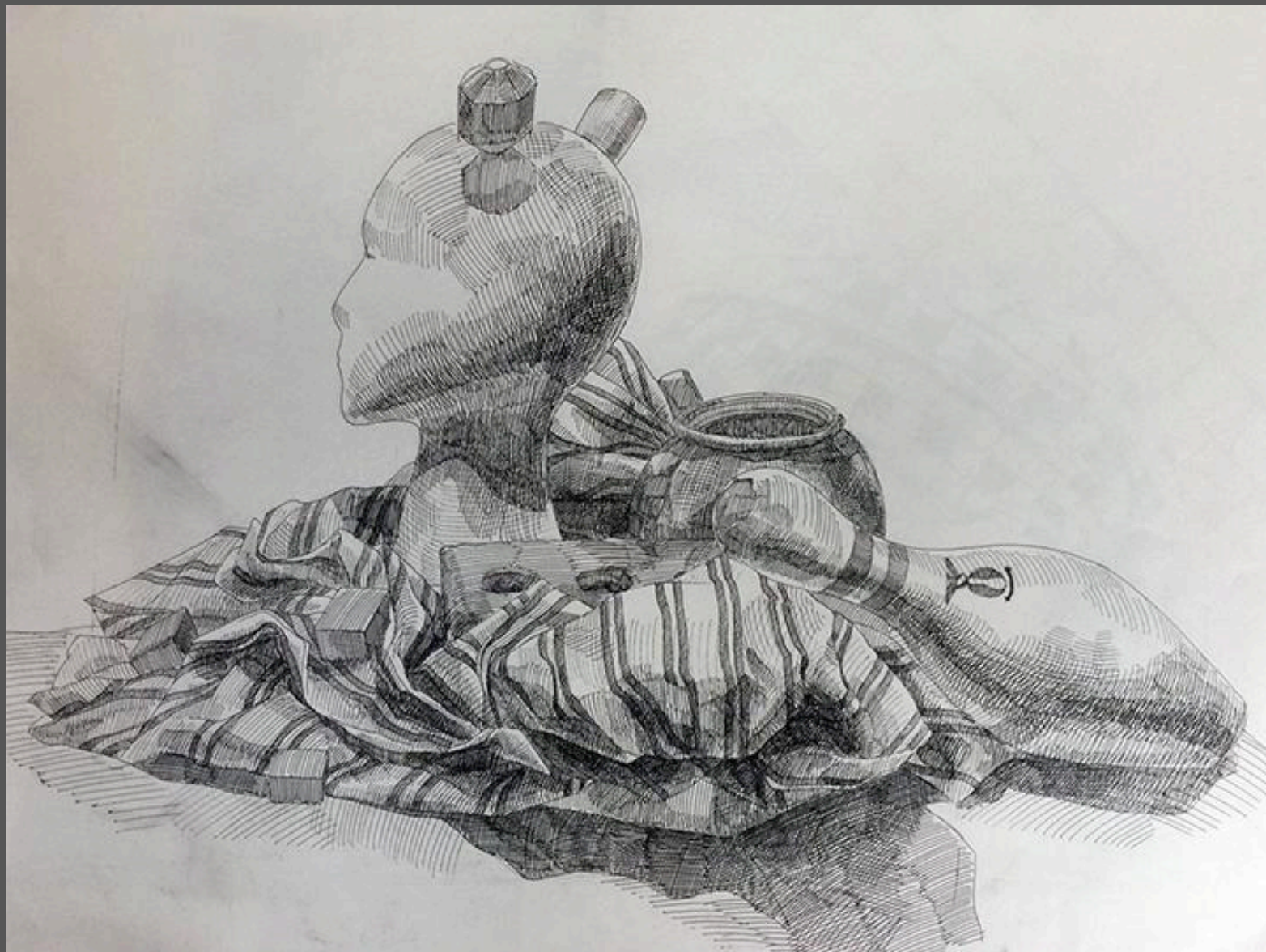
Emilee Johnson
"Lyn"
Pastel and Charcoal 2015)
10x14"

Pastel and Charcoal 2015)

10x14"



Maram AlMuqbil
"Additive Charcoal Still
Life"
Charcoal (2014)
18x24"



Junyong Jang
"Crosshatch Still Life"
Pen (2016)
18x24"